

Accessories Components	Reference Drawing <sup>(3)</sup>	Mettler Toledo Part Number						
		PS15	PS30	PS3L	PS60	PS6L	PS90U - 150 lb	PS90U- 300 lb
Stainless Steel Platter	NA	NA	See Replacement	See Replacement	See Replacement	See Replacement	09060167000	09060167000
Roller Top Platter	Picture Below	NA	NA	NA	09060164000	09060164000	09060168000	09060168000
Ball Top Platter	Picture Below	NA	NA	NA	09060161000	09060161000	09060169000	09060169000
Conveyor Drop-in Kit (Rail Brackets)	Picture Below	NA	NA	NA	NA	NA	64058112	64058112
Single Wall 2nd Display - 10 ft Y cable	D5, D9, D10	NA	02705900000 <sup>(1)</sup>	02705A00000 <sup>(1)</sup>	02705100000 <sup>(1)</sup>	02705700000 <sup>(1)</sup>	02705100000 <sup>(1)</sup>	02705B00000 <sup>(1)</sup>
Dual Display Tower - 10 ft Cable	D6, D12, D13	NA	02706900000 <sup>(1)</sup>	02706A00000 <sup>(1)</sup>	02706100000 <sup>(1)</sup>	02706700000 <sup>(1)</sup>	02706100000 <sup>(1)</sup>	02706B00000 <sup>(1)</sup>
Single Tower 2nd Display - 10 ft Y Cable	D7, D11, D13	NA	02707900000 <sup>(1)</sup>	02707A00000 <sup>(1)</sup>	02707100000 <sup>(1)</sup>	02707700000 <sup>(1)</sup>	02707100000 <sup>(1)</sup>	02707B00000 <sup>(1)</sup>
14 ft Display Extension Cable RJ45 T-IMP	C3	NA	09010504000	09010504000	09010504000	09010504000	09010504000	09010504000
10 ft RS232 Extension Cable DB M/F	C1	09000322000	09000322000	09000322000	09000322000	09000322000	09000322000 <sup>(2)</sup>	09000322000 <sup>(2)</sup>
10 ft USB cable	C2	64057361	64057361	64057361	64057361	64057361	64057361	64057361

Replacement Components	Reference Drawing <sup>(3)</sup>	Mettler Toledo Part Number						
		PS15	PS30	PS3L	PS60	PS6L	PS90U - 150 lb	PS90U - 300 lb
Base Mount Display	D1, D8	02701C00000 <sup>(1)</sup>	02701900000 <sup>(1)</sup>	02701A00000 <sup>(1)</sup>	02701100000 <sup>(1)</sup>	02701700000 <sup>(1)</sup>	02701100000 <sup>(1)</sup>	02701B00000 <sup>(1)</sup>
Single Tower Display	D2, D11, D13	NA	02702900000 <sup>(1)</sup>	02702A00000 <sup>(1)</sup>	02702100000 <sup>(1)</sup>	02702700000 <sup>(1)</sup>	02702100000 <sup>(1)</sup>	02702B00000 <sup>(1)</sup>
Single Wall Mount Display	D3, D9, D10	NA	02703900000 <sup>(1)</sup>	02703A00000 <sup>(1)</sup>	02703100000 <sup>(1)</sup>	02703700000 <sup>(1)</sup>	02703100000 <sup>(1)</sup>	02703B00000 <sup>(1)</sup>
Dual Wall Mount Display	D4, D9, D10	NA	02704900000 <sup>(1)</sup>	02704A00000 <sup>(1)</sup>	02704100000 <sup>(1)</sup>	02704700000 <sup>(1)</sup>	02704100000 <sup>(1)</sup>	02704B00000 <sup>(1)</sup>
Display Cable-14ft RJ45/RJ45 T-IMP	D3 Cable only	NA	14881200A	14881200A	14881200A	14881200A	14881200A	14881200A
"Y" Display Cable -10ft 3xRJ45 + Adp	C6	NA	09010420000	09010420000	09010420000	09010420000	09010420000	09010420000
10' RS232 Cable DB9 / RJ12	C4	16317400A	16317400A	16317400A	16317400A	16317400A	16317400A <sup>(2)</sup>	16317400A <sup>(2)</sup>
10' RS232 Cable DB9 M/F- PS90 Non-USB	C1	NA	NA	NA	NA	NA	09000322000	09000322000
6 ft USB Cable - Connector A&B	C5	16630200A	16630200A	16630200A	16630200A	16630200A	16630200A <sup>(2)</sup>	16630200A <sup>(2)</sup>
Power Supply - 9V US Plug	NA	64067873	64067873	64067873	64067873	64067873	64067873	64067873
Power Supply - 9V International Plug Kit	NA	64065301	64065301	64065301	64065301	64065301	64065301	64065301
Plastic Platter	NA	A16093800B	14819500D	14819500D	14819500D	14819500D	NA	NA
Stainless Steel Platter	NA	NA	A15083400A	A15083400A	A15083400A	A15083400A	See Accessories	See Accessories
Scale Feet	NA	16518600A	B14100500A	64067535	64067535	64067535	71206403	71206403
Level Indicator	NA	14813500A	64067538	64067538	64067538	64067538	71206333	71206333

(1) For 0270-1X00, X is dependant on specific scale capacity (IE: X=1 - 150x0.05 lb / 60x0.02kg, X=7 - 10/70/149lb x 0.1/0.2/0.5oz, X=9 - 70 lbx0.05lb, X=A - 7/70lb x 0.1/0.2oz, X=B - 300x0.1lb/150x0.05kg, X=C = 30x0.1 lb / 15x0.005kg)

Consult Technical service if capacity range is not listed above

(2) Applies to PS90 USB versions only.

(3) See Fig number on drawing and dimensions for displays and cables



2nd Display - Tower with 10 ft "Y" cable



2nd Display - Wall with 10 ft. "Y" Cable



Dual Wall Mount Display with 6 ft Cables



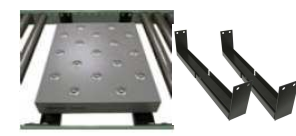
Dual Display Tower with 10 ft. Cables.



PS90 Ball Top



PS90 Roller Top



Conveyor Drop-In Kit ( Rail)